

PCR TIRES
Catalogue 2015

 **SEAMTYRE**

AL NOUF AUTO TYRES

P.O. BOX 72581 SHARJAH, UAE
TELEPHONE: +971 6 530 3584
FAX: +971 6 530 3586
MOBILE: +971 55 956 1980
WWW.ALNOUFTIRE.COM
EMAIL: ANC.TIRE@YAHOO.COM


AL NOUF AUTO
TYRES & ACCESSORIES



AL NOUF AUTO TYRES TR. L.L.C



INTRODUCTION

Al Nouf Auto tyres is a leading United Arab Emirates tyre distribution company which focuses on the daily distribution of premium brand tires of the following segments; Passenger Cars, SUVs, 4x4 Cars, Light trucks and other trucks.

We are an experienced company with over eleven years in business; first opened in 2004 in the Emirates of Sharjah, UAE. Since that time we have grown to be premier tyre distributor, importer and exporter in the United Arab Emirates. We have developed our business relations with European, Middle Eastern, North American, African, Asian and Gulf countries.

Al Nouf tyres provides full line of tyres to meet the needs of virtually all customers from everyday motorists to the most demanding high performance, off-road and motorsports enthusiasts. We promise to continue offering our customers great quality products at most affordable prices with friendly people to assist you with your purchase of tyres.

Al Nouf Auto Tyres is the owner of SEAMTYRE brand in worldwide. We are also distributor of premium brand tyres such as Michelin, Continental, Dunlop, Goodyear, Bridgestone, Falken, Firestone, Pirelli, Yokohama, Nexen, Hankook, GT, Nankangetc.

We would welcome the opportunity deliver the best products to meet your needs and look forward to earn your trust as the best supplier of tyres.



PATTERNS INTRODUCTION



GT MAX PEARLY(PCR) PEARLY(SUV) GOODRUN LANDTOUR GRANDTOUR

1/2

3/4

5/6

7/8

9/10

11/12



BF NEXA MAXTOUR PRIMA SAND TYRE HU901

13/14

15/16

17/18

19/20

21/22

23/24

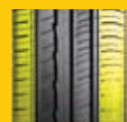


GT MAX

UTQG : 420 AA 13"
UTQG : 560 AA 14" AND ABOVE



① Four wide circumferential tread grooves deliver the ride stability and offer excellent performance on wet conditions. Improved grooves and bead profile design offer better ride stability, endurance and handling performance.



② Continuous tread blocks on both shoulder give great support to enhance the stability when cornering. The closed shoulders deliver excellent quiet ride.



③ Continuous solid center ribs and lateral tread blocks connected by rib-in-chain enhance steering stability, decrease block deformation and reduce energy loss.



④ Special tread compound delivers excellent grip on both dry and wet roads and offers longer mileage.

Comfortable & Economic PCR tire



SEAMTYRE PCR
 TIRES
 • Engineered in Japan

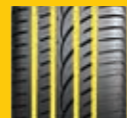
Sizes Description	Sidewall description	RIM	MM	1/32"	width MM	OA.diameter MM	Max pressure Kpa/PSI	RR	WG	SL
*145/70R12 69T	BLK	4.5	7.3	9.0	150	509	300/44	E	C	68
*155/70R12 73T	BLK	4.5	7.3	9.0	157	523	300/44	E	C	68
155/65R13 73T	BLK	5.0	7.8	9.2	157	540	300/44	E	C	68
155/70R13 75T	BLK	4.5	7.3	9.2	157	548	300/44	E	C	68
155/80R13 79T	BLK	4.5	7.3	9.2	157	578	300/44	E	C	68
165/65R13 77T	BLK	5.0	7.3	9.2	170	544	300/44	E	C	68
165/70R13 79T	BLK	5.0	7.3	9.2	170	562	300/44	E	C	68
165/80R13 83T	BLK	4.5	7.3	9.2	165	594	300/44	E	C	68
175/60R13 77H	BLK	5.0	7.3	9.2	177	540	300/44	E	C	68
175/70R13 82T	BLK	5.0	7.3	9.2	177	576	300/44	E	C	68
185/70R13 86T	BLK	5.5	7.3	9.2	189	590	300/44	E	C	68
*155/65R14 75H	BLK	4.5	7.3	9.2	154	557	300/44	E	C	68
*165/60R14 75H	BLK	5.0	7.3	9.2	170	554	300/44	E	C	68
*165/65R14 79H	BLK	5.0	7.3	9.2	170	570	300/44	E	C	68
*165/70R14 81H	BLK	5.0	7.3	9.2	170	588	300/44	E	C	68
*165/70R14 85TXL	BLK	5.0	7.0	9.0	170	588	340/50	E	C	69
175/65R14 82H	BLK	5.0	7.3	9.2	177	584	300/44	E	C	68
175/65R14 86TXL	BLK	5.0	7.3	9.2	177	584	340/50	E	C	68
175/70R14 84H	BLK	5.0	7.3	9.2	177	602	300/44	E	C	68
175/70R14 88TXL	BLK	5.0	7.3	9.2	177	602	340/50	E	C	68
185/60R14 82H	BLK	5.5	7.5	9.4	189	578	300/44	E	C	68
185/65R14 86H	BLK	5.5	7.5	9.4	189	609	300/44	E	C	68
185/70R14 88H	BLK	5.5	7.5	9.4	189	616	300/44	E	C	68
195/60R14 86H	BLK	6.0	7.5	9.4	201	590	300/44	E	C	69
195/70R14 91H	BLK	6.0	7.5	9.4	201	630	300/44	E	C	69
205/60R14 88H	BLK	6.0	7.8	9.8	209	602	300/44	E	C	69
205/70R14 95H	BLK	6.0	7.8	9.8	209	644	300/44	E	C	69
215/70R14 96H	BLK	6.5	8.0	10	220	654	300/44	E	C	70
*175/55R15 77H	BLK	5.5	7.5	9.4	182	573	300/44	E	C	68
*175/60R15 81H	BLK	5.0	7.5	9.4	177	591	300/44	E	C	68
175/65R15 84H	BLK	5.0	7.5	9.4	177	609	300/44	E	C	68
185/55R15 82H	BLK	6.0	7.5	9.4	194	585	300/44	E	C	68
185/55R15 82V	BLK	6.0	7.5	9.4	194	585	300/44	E	C	68
185/60R15 84H	BLK	5.5	7.5	9.4	189	603	300/44	E	C	68
185/60R15 88HXL	BLK	5.5	7.5	9.4	189	603	340/50	E	C	68
185/65R15 88H	BLK	5.5	7.5	9.4	189	621	300/44	E	C	68
195/60R15 88H	BLK	6.0	7.5	9.4	201	615	300/44	E	C	69
195/60R15 88V	BLK	6.0	7.5	9.4	201	615	300/44	E	C	69
195/65R15 91H	BLK	6.0	7.5	9.0	201	635	300/44	E	C	69
195/65R15 91V	BLK	6.0	7.5	9.4	201	635	300/44	E	C	69
195/65R15 95HXL	BLK	6.0	7.5	9.4	201	635	340/50	E	C	69
205/60R15 91V	BLK	6.0	7.8	9.8	209	627	300/44	E	C	69
205/60R15 91H	BLK	6.0	7.8	9.8	209	627	300/44	E	C	69
205/65R15 94H	BLK	6.0	7.8	9.8	209	647	300/44	E	C	69
205/65R15 94V	BLK	6.0	7.8	9.8	209	647	300/44	E	C	69
205/70R15 96H	BLK	6.0	7.8	9.8	209	669	300/44	E	C	69
215/60R15 94H	BLK	6.5	8.0	10.0	218	638	300/44	E	C	70
215/65R15 96H	BLK	6.5	8.0	10.0	221	661	300/44	E	C	70
215/70R15 98H	BLK	6.5	8.0	10.0	221	683	300/44	E	C	70
225/70R15 100H	BLK	6.5	8.0	10.0	228	697	300/44	E	C	70
205/55R16 91V	BLK	6.5	7.8	9.8	214	632	300/44	E	C	69
205/60R16 92V	BLK	6.0	7.8	9.8	209	652	300/44	E	C	69
205/60R16 92H	BLK	6.0	7.8	9.8	209	652	300/44	E	C	69
205/60R16 96HXL	BLK	6.0	7.8	9.8	209	652	340/50	E	C	69
215/55R16 93H	BLK	7.0	7.8	10.0	226	642	300/44	E	C	70
215/60R16 95V	BLK	6.5	8.0	10.0	221	664	300/44	E	C	70
215/60R16 99HXL	BLK	6.5	8.0	10.0	221	664	340/50	E	C	70
215/65R16 98H	BLK	6.5	8.0	10.0	221	686	300/44	E	C	70
225/60R16 98H	BLK	6.5	8.0	10.0	228	676	300/44	E	C	70
235/60R16 100H	BLK	7.0	8.0	10.0	240	688	300/44	E	C	70

* New Developing Sizes
 The labeling information is subject to change without notice.



PEARLY(PCR)

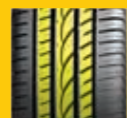
UTQG: 300 A A



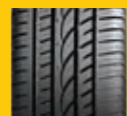
① Four wide circumferential tread grooves and lateral grooves with fine sipes provide efficient water evacuation, outstanding wet performance.



② Continuous block patterns on shoulder enhance the ride stability at high speed cornering. The rim protector will protect wheels from curb damage.



③ Continuous outside tread blocks enhance excellent performance and precise control when cornering at high speed. The special rib segment design optimizes contact pressure distribution, improve road contact area and provide precise control. The serrated groove walls absorb noise and deliver a quieter ride.



④ Special tread compound delivers excellent grip on both dry and wet roads and reduce the rolling resistance to save oil and protect environment.

Ultra High Performance & Sport



Sizes Description	Sidewall description	RIM	MM	1/32"	width MM	OA.diameter MM	Max pressure Kpa/PSI	RR	WG	SL
195/50R15 82V	BLK	6.0	8.0	10.0	201	577	300/44	E	C	70
195/55R15 85V	BLK	6.0	8.0	10.0	201	595	300/44	E	C	70
195/45R16 84VXL	BLK	6.5	8.0	10.0	195	582	340/50	E	C	70
195/55R16 91VXL	BLK	6.0	8.0	10.0	190	619	340/50	E	C	70
205/45ZR16 87WXL	BLK	7.0	8.0	10.0	206	590	340/50	E	C	70
205/50ZR16 91WXL	BLK	6.5	8.0	10.0	214	612	340/50	E	C	70
205/55ZR16 94WXL	BLK	6.5	8.0	10.0	214	632	340/50	E	C	70
215/55ZR16 97WXL	BLK	7.0	8.0	10.0	226	642	340/50	E	C	71
225/55ZR16 99WXL	BLK	7.0	8.0	10.0	233	680	340/50	E	C	71
205/40ZR17 84WXL	BLK	7.5	8.0	10.0	212	596	340/50	E	C	70
205/45ZR17 88WXL	BLK	7.0	8.0	10.0	206	616	340/50	E	C	70
205/50ZR17 93WXL	BLK	6.5	8.0	10.0	214	638	340/50	E	C	70
215/45ZR17 91WXL	BLK	7.0	8.0	10.0	213	626	340/50	E	C	71
215/50ZR17 95WXL	BLK	7.5	8.0	10.0	226	648	340/50	E	C	71
215/55ZR17 98WXL	BLK	7.0	8.0	10.0	226	668	340/50	E	C	71
225/45ZR17 94WXL	BLK	7.5	8.0	10.0	225	634	340/50	E	C	71
225/50ZR17 98WXL	BLK	8.0	8.0	10.0	233	658	340/50	E	C	71
225/55ZR17 101WXL	BLK	7.0	8.0	10.0	233	680	340/50	E	C	71
235/45ZR17 97WXL	BLK	7.5	8.0	10.0	236	644	340/50	E	C	71
235/50ZR17 100WXL	BLK	7.5	8.0	10.0	245	668	340/50	E	C	71
235/55ZR17 103WXL	BLK	7.5	8.0	10.0	245	690	340/50	E	C	71
245/45ZR17 99WXL	BLK	8.0	8.0	10.0	243	652	340/50	E	C	72
215/35ZR18 84WXL	BLK	7.5	8.0	10.0	218	607	340/50	E	C	71
225/40ZR18 92WXL	BLK	8.5	8.0	10.0	230	637	340/50	E	C	71
225/45ZR18 95WXL	BLK	7.5	8.0	10.0	225	659	340/50	E	C	71
235/40ZR18 95WXL	BLK	8.5	8.0	10.0	241	645	340/50	E	C	71
235/45ZR18 98WXL	BLK	8.0	8.0	10.0	240	667	340/50	E	C	71
235/50ZR18 101WXL	BLK	7.5	8.0	10.0	243	693	340/50	E	C	71
245/40ZR18 97WXL	BLK	8.5	8.0	10.0	248	653	340/50	E	C	72
245/45ZR18 100WXL	BLK	8.0	8.0	10.0	243	677	340/50	E	C	72
255/35ZR18 94WXL	BLK	9.0	7.2	9.0	260	635	340/50	E	C	70
255/40ZR18 99WXL	BLK	9.0	8.0	10.0	263	661	340/50	E	C	72
*225/35ZR19 88WXL	BLK	8.0	8.0	10.0	232	642	340/50	E	C	71
235/35ZR19 91WXL	BLK	8.5	8.0	10.0	241	647	340/50	E	C	71
245/35ZR19 93WXL	BLK	8.5	8.0	10.0	248	655	340/50	E	C	72
*245/40ZR19 98WXL	BLK	8.5	8.0	10.0	251	679	340/50	E	C	72
*245/45ZR19 102WXL	BLK	8.0	7.2	9.0	243	703	340/50	E	C	71
*255/35ZR19 96WXL	BLK	9.0	7.2	9.0	260	661	340/50	E	C	72
225/35ZR20 90WXL	BLK	8.0	7.2	9.0	230	641	340/50	E	C	71
225/35ZR20 93WXL	BLK	8.0	8.0	10.0	230	666	340/50	E	C	72
245/30ZR20 90WXL	BLK	8.5	8.0	10.0	247	657	340/50	E	C	72
245/30ZR20 97WXL	BLK	8.5	8.0	10.0	247	657	340/50	E	C	72
245/35ZR20 95WXL	BLK	8.5	8.0	10.0	248	680	340/50	E	C	72
*245/45ZR20 103WXL	BLK	8.0	8.0	10.0	243	728	340/50	E	C	72
255/35ZR20 97WXL	BLK	9.0	8.0	10.0	260	686	340/50	E	C	72
255/35ZR20 102WXL	BLK	9.0	7.2	9.0	260	686	340/50	E	C	72
*255/45ZR20 103WXL	BLK	8.5	7.2	9.0	255	738	340/50	E	C	72
*245/30ZR22 92WXL	BLK	8.5	8.0	10.0	247	708	340/50	E	C	72
*255/30ZR22 95WXL	BLK	9.0	8.0	10.0	259	713	340/50	E	C	72
*255/30ZR24 97WXL	BLK	9.0	8.0	10.0	255	767	340/50	E	C	72
*275/25ZR24 96WXL	BLK	10.0	8.0	10.0	277	751	340/50	E	C	72

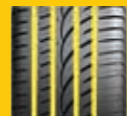
* New Developing Sizes
The labeling information is subject to change without notice.



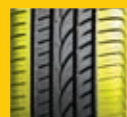
PEARLY(SUV)



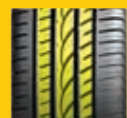
UTQG : 300AA 18" AND ABOVE
UTQG : 420AA 17"



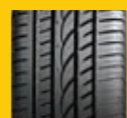
① Four wide circumferential tread grooves and lateral grooves with fine sipes provide efficient water evacuation, outstanding wet performance.



② Continuous block patterns on shoulder enhance the ride stability at high speed cornering. The rim protector will protect wheels from curb damage.



③ Continuous outside tread blocks enhance excellent performance and precise control when cornering at high speed. The special rib segment design optimizes contact pressure distribution, improve road contact area and provide precise control. The serrated groove walls absorb noise and deliver a quieter ride.



④ Special tread compound delivers excellent grip on both dry and wet roads and reduces the rolling resistance to save oil and protect environment.

Ultra High Performance & Sport



Sizes Description	Sidewall description	RIM	MM	1/32' '	width MM	OA.diameter MM	Max pressure Kpa/PSI	RR	WG	SL
235/65R17 108HXL	BLK	7.0	8.5	10.8	240	738	340/50	E	C	71
245/65R17 107H	BLK	7.0	8.5	10.8	248	750	300/44	E	C	72
255/60R17 110VXL	BLK	7.5	8.5	10.8	260	738	340/50	E	C	72
255/65R17 110H	BLK	7.5	8.5	10.8	260	764	300/44	E	C	72
265/65R17 112H	BLK	8.0	8.5	10.8	272	776	300/44	E	C	72
255/55R18 109VXL	BLK	8.0	8.5	10.8	265	737	340/50	E	C	72
255/60R18 112VXL	BLK	8.0	8.5	10.8	265	737	340/50	E	C	72
255/50R19 107VXL	BLK	8.0	8.5	11.0	265	739	340/50	E	C	72
255/55R19 111VXL	BLK	8.0	8.5	10.8	265	763	340/50	E	C	72
265/50R20 111VXL	BLK	9.0	8.5	10.8	277	774	340/50	E	C	72
275/40R20 106VXL	BLK	9.5	8.5	10.8	278	728	340/50	E	C	72
275/45R20 110VXL	BLK	9.0	8.5	10.8	273	756	340/50	E	C	72
275/55R20 117VXL	BLK	8.5	8.5	10.8	284	810	340/50	E	C	72
275/60R20 119VXL	BLK	8.0	8.5	10.8	279	838	340/50	E	C	72
285/50R20 116VXL	BLK	9.0	8.5	10.8	297	794	340/50	E	C	72
*295/35R21 107WXL	BLK	10.5	8.5	10.8	301	739	340/50	E	C	72
*295/40R21 111WXL	BLK	10.5	8.5	10.8	301	769	340/50	E	C	72
*265/35R22 102VXL	BLK	9.5	8.5	10.8	271	745	340/50	E	C	72
*285/35R22 106VXL	BLK	10.0	8.5	10.8	290	759	340/50	E	C	72
*305/40R22 114VXL	BLK	11.0	8.5	10.8	313	803	340/50	E	C	72
*305/45R22 118VXL	BLK	10.0	8.5	10.8	303	833	340/50	E	C	72
*295/35R24 110VXL	BLK	10.5	8.5	10.8	301	816	340/50	E	C	72
*305/35R24 112VXL	BLK	11.0	8.5	10.8	313	824	340/50	E	C	72

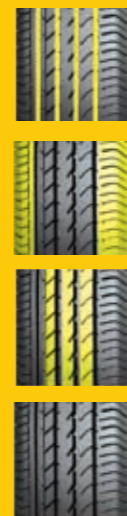
* New Developing Sizes
 The labeling information is subject to change without notice.



GOODRUN



UTQG: 420 A A



- ① Perfect handling performance and good cornering performance.
- ② Asymmetric pattern shape, optimized variable pitch pattern design, provide quiet ride environment.
- ③ Nice driving pleasure comes from strong tread and soft sidewall.
- ④ Silica tread compound for low rolling resistance and good wet grip.

High Performance PCR tire



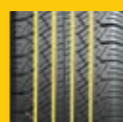
SEAMTYRE PCR
TIREs
• Engineered in Japan

Sizes Description	Sidewall description	RIM	MM	1/32"	width MM	OA.diameter MM	Max pressure Kpa/PSI	RR	WG	SL
185/60R14 82H	BLK	5.5	7.5	9.4	189	578	300/44	-	-	-
195/55R15 85H	BLK	6.0	7.4	9.0	201	595	300/44	-	-	-
195/55R15 85V	BLK	6.0	7.8	9.8	201	595	300/44	-	-	-
195/60R15 88H	BLK	6.0	7.8	9.8	201	615	300/44	-	-	-
195/60R15 88V	BLK	6.0	7.8	9.8	201	615	300/44	-	-	-
205/55R16 91H	BLK	6.5	7.8	9.8	214	632	300/44	-	-	-
205/55R16 91V	BLK	6.5	7.8	9.8	214	632	300/44	-	-	-
215/55R16 93H	BLK	7.0	8.0	10.0	226	642	300/44	-	-	-
215/60R16 95H	BLK	6.5	8.0	10.0	221	664	300/44	-	-	-
225/60R16 98H	BLK	6.5	8.0	10.0	228	676	300/44	-	-	-
235/60R16 100H	BLK	7.0	8.0	10.0	240	688	300/44	-	-	-

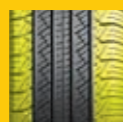


LANDTOUR

UTQG: 420 A A



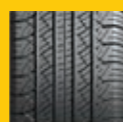
① Four wide circumferential tread grooves deliver the ride stability and offer excellent performance on wet conditions. Improved grooves and bead profile design offer better ride stability, endurance and handling performance.



② The open shoulder grooves prevent aquaplaning with enhanced wet grip performance and provide excellent water evacuation. Continuous tread blocks on both shoulder give great support to enhance the ride stability when cornering.



③ Variable pitch pattern and solid center ribs improve the ride stability, reduce the noise and deliver a comfortable ride.



④ High-density sipes with special compound deliver a smooth ride and improve traction on dry and wet roads. Jointless Nylon band and strong structure design provided the strong carcass to enhance the reliability and durability.

Sizes Description	Sidewall description	RIM	MM	1/32'	width MM	OA.diameter MM	Max pressure Kpa/PSI	RR	WG	SL
235/70R16 106H	BLK	7.0	8.5	10.8	240	736	300/44	E	C	71
245/70R16 107H	BLK	7.0	8.5	10.8	248	750	300/44	E	C	71
245/70R16 111HXL	BLK	7.0	8.5	10.8	248	750	340/50	E	C	71
255/65R16 109H	BLK	7.5	8.5	10.8	262	737	300/44	E	C	71
255/70R16 111H	BLK	7.5	8.5	10.8	260	764	300/44	E	C	71
265/70R16 112H	BLK	8.0	8.5	10.8	272	778	300/44	E	C	71
275/70R16 114H	BLK	8.0	8.5	10.8	279	792	300/44	E	C	72
215/60R17 96H	BLK	6.5	8.5	10.8	221	680	300/44	E	C	71
215/65R17 99H	BLK	6.5	8.5	10.8	221	710	300/44	E	C	71
225/60R17 99H	BLK	6.5	8.5	10.8	228	702	300/44	E	C	71
225/65R17 102H	BLK	6.5	8.5	10.8	228	724	300/44	E	C	71
235/60R17 102H	BLK	7.0	8.5	10.8	240	714	300/44	E	C	71
235/60R17 106HXL	BLK	7.0	8.5	10.8	240	714	300/44	E	C	71
235/65R17 104H	BLK	7.0	8.5	10.8	240	738	300/44	E	C	71
245/65R17 107H	BLK	7.0	8.5	10.8	248	750	340/50	E	C	71
245/65R17 111HXL	BLK	7.0	8.5	10.8	248	750	300/44	E	C	71
255/65R17 110H	BLK	7.5	8.5	10.8	260	764	300/44	E	C	71
265/65R17 112H	BLK	8.0	8.5	10.8	272	776	300/44	E	C	71
265/70R17 115H	BLK	8.0	8.5	10.8	272	804	300/44	E	C	71
275/65R17 115H	BLK	8.0	8.5	10.8	279	791	300/44	E	C	72
285/65R17 116H	BLK	8.5	8.5	10.8	292	802	300/44	E	C	72
235/55R18 104HXL	BLK	7.5	8.5	10.8	245	715	340/50	E	C	71
235/60R18 107HXL	BLK	7.0	8.5	10.8	240	739	300/44	E	C	71
265/60R18 110H	BLK	8.0	8.5	10.8	272	775	300/44	E	C	71
285/60R18 116H	BLK	8.5	8.5	10.8	290	802	300/44	E	C	72



GRANDTOUR



UTQG: 500A B (ONLY P SERIES)



- ① Four main zigzag grooves and rough lateral blocks provide excellent traction on all kinds of road conditions.
- ② The open shoulder grooves prevent aquaplaning with enhanced wet grip performance and provide excellent water evacuation. The white letter styling provides an artistic image.
- ③ The block tread design with multiple-sipes provides outstanding off-road traction and reduces tread damage on off-road condition.
- ④ Jointless Nylon band and strong structure design provide strong carcass to enhance the reliability and durability. Special tread compound and wide footprint enhance tread life and deliver excellent braking on wet and dry roads.

ALL-Terrain Tire



Sizes Description	Sidewall description	RIM	MM	1/32' '	width MM	OA.diameter MM	Max pressure Kpa/PSI	RR	WG	SL
P235/75R15 109SXL	OWL	6.5	9.00	11.4	235	733	340/50	-	-	-
P215/70R16 99T/100T	RBL	6.5	9.00	11.4	221	768	300/44	-	-	-
P225/70R16 101T	OWL	6.5	9.00	11.4	228	722	300/44	-	-	-
P225/70R16 103T	OWL	6.5	8.5	11.0	228	722	300/44	-	-	-
P235/70R16 104T/106T	OWL	7.0	9.00	11.4	240	736	300/44	-	-	-
P245/70R16 106T/107T	OWL	7.0	9.00	11.4	248	750	300/44	-	-	-
P245/70R16 111SXL	OWL	7.0	9.0	11.0	248	750	340/50	-	-	-
P255/70R16 111T/109T	OWL	7.5	9.50	12.0	260	764	300/44	-	-	-
P265/70R16 111T/112T	OWL	8.0	9.50	12.0	272	778	300/44	-	-	-
P275/70R16 114T	OWL	8.0	9.50	12.0	279	792	300/44	-	-	-
P255/65R17 110T	OWL	7.5	9.50	12.0	259	762	300/44	-	-	-
P265/65R17 110T/112T	OWL	7.0	9.50	12.0	272	776	300/44	-	-	-
P265/70R17 113T/115T	OWL	8.0	9.50	12.0	272	804	300/44	-	-	-
P275/65R17 115T	OWL	8.0	9.50	12.0	279	791	300/44	-	-	-
LT235/75R15 C 104/101S	OWL	6.5	11.5	14.4	233	733	350/51	-	-	-
31X10.50R15LT C 109S	OWL	8.5	11.5	14.4	268	775	350/51	-	-	-
215R15C 112/110S	RBL	6.0	9.0	11.0	218	724	450/65	-	-	-
245/75R15C 109/107S	RBL	7.0	11.5	14.0	248	749	375/55	-	-	-
LT215/85R16 E 115/112S	OWL	6.0	11.5	14.4	216	772	550/80	-	-	-
LT225/75R16 E 115/112S	OWL	6.0	11.5	14.4	223	744	550/80	-	-	-
LT235/85R16 E 120/116S	RBL	6.5	12.0	15.0	235	806	550/80	-	-	-
LT245/75R16 E 120/116S	OWL	7.0	11.5	14.4	248	774	550/80	-	-	-
LT265/75R16 E 123/120S	OWL	7.5	12.0	15.0	267	804	550/80	-	-	-
LT285/75R16 D 122/119S	OWL	8.0	12.0	15.0	286	834	450/65	-	-	-
205R16C C 110/108S	RBL	5.5	11.5	14.4	200	738	375/55	-	-	-
185/75R16C D 104/102S	RBL	5.0	9.00	11.4	184	684	475/69	-	-	-
LT245/75R17 E 121/118S	OWL	7.0	12.0	15.0	248	800	550/80	-	-	-
LT265/70R17 E 121/118S	OWL	8.0	12.0	15.0	272	804	550/80	-	-	-

* New Developing Sizes
The labeling information is subject to change without notice.



BF



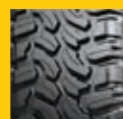
① Three main zigzag grooves and aggressive pattern design provide outstanding traction on all kinds of road conditions.



② High void ratio and open shoulder offer excellent resistance to aquaplaning and self-cleaning performance.



③ The block tread design with multiple-sipes provide outstanding off-road traction and reduce tread damage on off-road condition. Special casing profile and solid shoulder pattern enhance the max traction and cornering performance.



④ Jointless Nylon band and strong structure design provide strong carcass to enhance the reliability and durability. Special tread compound and wide footprint enhance tread life and deliver excellent braking on wet and dry roads.

MUD-Terrain & Off-Road Tire



Sizes Description	Sidewall description	RIM	MM	1/32' /	width MM	OA.diameter MM	Max pressure Kpa/PSI	RR	WG	SL
LT31X10.50R15 C 109Q	RBL	8.5	13.5	16.8	268	775	350/51	-	-	-
*LT33X12.50R15 C 108Q	RBL	10.0	13.5	16.8	320	838	350/51	-	-	-
*LT35X12.50R15 C 113Q	RBL	10.0	14.5	18.2	326	890	350/51	-	-	-
LT235/85R16 E 120/116Q	RBL	6.5	13.5	16.8	235	806	550/80	-	-	-
LT245/75R16 E 120/116Q	RBL	7.0	13.5	16.8	248	771	550/80	-	-	-
LT265/75R16 E 123/120Q	RBL	7.5	13.5	16.8	267	804	550/80	-	-	-
LT285/75R16 E 126/123Q	RBL	8.0	13.5	16.8	286	834	550/80	-	-	-
*LT35X12.50R17 LT 121Q	BLK	10.0	13.5	17.0	318	877	450/65	-	-	-
LT265/70R17 E 121/118Q	RBL	8.0	13.5	16.8	272	804	550/80	-	-	-
LT285/70R17 E 121/118Q	RBL	8.5	13.5	16.8	284	831	550/80	-	-	-

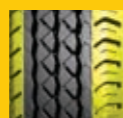
* New Developing Sizes
The labeling information is subject to change without notice.



NEXA



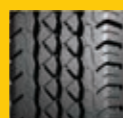
① Three main zigzag grooves combined with lateral blocks provide excellent ride stability and great traction on all kinds of road conditions.



② Continuous tread patterns on shoulder and solid shoulder ribs provide responsive handling and even wear.



③ Variable pitch patterns and multi-knife-cut tread patterns reduce vibration to offer a comfort and quiet ride.



④ Reinforced structure and special abrasion-resistant tread compound deliver extra puncture resistance and load bearing capability with more mileage.

Commercial Tire



Sizes Description	Sidewall description	RIM	MM	1/32' "	width MM	OA.diameter MM	Max pressure Kpa/PSI	RR	WG	SL
*155R12C 88/86Q-8PR	BLK	4.5	8.0	10.0	157	550	450/65	E	C	70
*155R13C 85/83Q-6PR	BLK	4.5	8.0	10.0	157	578	450/65	E	C	70
*155R13C 90/88Q-8PR	BLK	4.5	8.0	10.0	157	578	450/65	E	C	70
*165/70R14C 89/87R-6PR	BLK	5.0	8.0	10.0	170	588	375/55	E	C	71
*175/65R14C 90/88T-6PR	BLK	5.0	8.4	11.0	177	584	375/55	E	C	71
185R14C 102/100R	BLK	5.5	8.5	10.8	188	650	450/65	E	C	71
195R14C 106/104R	BLK	5.5	8.5	10.8	198	666	450/65	E	C	71
195R15C 106/104R	BLK	5.5	8.5	10.8	198	693	450/65	E	C	71
195/70R15C 104/102R	BLK	6.0	9.0	11.4	201	655	450/65	E	C	71
*205/70R15C 106/104R	BLK	6.0	9.0	11.4	209	669	450/65	E	C	71
*215/65R15C 104/102R	BLK	6.5	8.8	11.0	221	661	375/55	E	C	71
*215/70R15C 109/107R	BLK	6.5	9.5	11.8	221	683	450/65	E	C	72
225/70R15C 112/110R	BLK	6.5	9.5	11.8	228	697	450/65	E	C	72
*175/75R16C 101/99R	BLK	5.0	9.0	11.4	175	668	475/69	E	C	71
185/75R16C 104/102R	BLK	5.0	9.0	11.4	184	684	475/69	E	C	71
195/65R16C 104/102R	BLK	6.0	9.0	11.4	201	660	475/69	E	C	71
195/75R16C 107/105R	BLK	5.5	9.0	11.4	196	698	475/69	E	C	71
205/65R16C 107/105T	BLK	6.0	9.0	11.4	209	672	475/69	E	C	71
*205/75R16C 110/108R	BLK	5.5	9.0	11.4	203	714	475/69	E	C	71
215/65R16C 109/107T	BLK	6.5	9.5	11.8	221	664	475/69	E	C	72
*215/75R16C 113/111R	BLK	6.0	9.5	11.8	216	728	475/69	E	C	72
225/65R16C 112/110T	BLK	6.5	9.5	11.8	228	698	475/69	E	C	72
235/65R16C 115/113R	BLK	7.0	9.5	11.8	240	712	475/69	E	C	72

* New Developing Sizes
The labeling information is subject to change without notice.

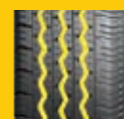


Commercial Tire -WSW



Sizes	Description	Sidewall description	RIM	MM	1/32"	width MM	OA.diameter MM	Max pressure Kpa/PSI	RR	WG	SL
155R13C	85/83R	RBL	4.5	8.0	10.0	157	578	350/51	-	-	-
155R13C	90/88R	RBL	4.5	8.00	10.0	157	578	450/65	-	-	-
185R14C	102/100R	WSW	5.5	8.50	10.8	188	650	450/65	-	-	-
195R14C	106/104R	WSW	5.5	8.50	10.8	198	666	450/65	-	-	-
205/75R14C	109/107R	WSW	5.5	8.50	10.8	203	664	475/69	-	-	-
185R15C	103/102R	WSW	5.5	8.50	10.8	188	674	450/65	-	-	-
195R15C	106/104R	WSW	5.5	8.50	10.8	198	693	450/65	-	-	-
205/75R15C	109/107R	WSW	5.5	8.50	10.8	203	689	475/69	-	-	-

MAXTOUR



① Reinforced structure and special abrasion resistant tread compound deliver extra puncture resistance and load bearing capability with more mileage.



② Three main zigzag grooves combined with lateral blocks provide excellent ride stability and great traction on all kinds of road conditions.



③ Continuous tread patterns on shoulder and solid shoulder ribs responsive handling and even wear.



④ White sidewall rib shows extraordinary appearance.

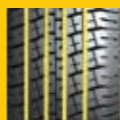
The labeling information is subject to change without notice.



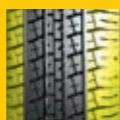
PRIMA



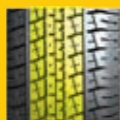
UTQG : 420 AB



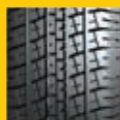
① Four main grooves provide good driving stability and wet performance.



② Reasonable pattern area, protect collocation of every groove.



③ Special tread compound, ensure tire performance stability in all kinds of weather conditions.



④ White sidewall rib shows extraordinary appearance.

White Sidewall Rib



Sizes Description	Sidewall description	RIM	MM	1/32"	width MM	OA.diameter MM	Max pressure Kpa/PSI	RR	WG	SL
*P195/75R14 92S	WSW	5.0	8.50	10.8	196	648	300/44	-	-	-
*P205/75R14 95S	WSW	5.5	8.50	10.8	203	664	300/44	-	-	-
*P205/70R15 95S	WSW	6.0	8.50	10.8	209	669	300/44	-	-	-
P205/75R15 97T	WSW	5.5	8.50	10.8	203	689	300/44	-	-	-
P215/75R15 100T	WSW	6.0	8.50	10.8	216	703	300/44	-	-	-
P225/70R15 100T	WSW	6.5	8.50	10.8	228	697	300/44	-	-	-
P225/75R15 102T	WSW	6.0	8.50	10.8	223	719	300/44	-	-	-
P235/75R15 105S	WSW	6.5	8.50	10.8	235	733	300/44	-	-	-

* New Developing Sizes
The labeling information is subject to change without notice.



SAND TYRE



① Suitable operating on sand ground and loose road surface, desert area. Made in Taiwan.



② The combination of wide tread, round shoulder and streamlined pattern design with uniform tread provide good floatation performance, stable ride, good floating force, excellent steering ability on sand ground road surface.



③ A kind of tire most suitable for use in desert and on loose road.

Sand Tyre

Sizes Description	LI/SI	Sidewall	RIM	Tread Depth	RR	WG	SL
900-16	107K	BSW	7.0	10.8mm	-	-	-
900-17	107K	BSW	8.0	8.5mm	-	-	-
900-18	118/116M	BSW	8.0	8.5mm	-	-	-
825-16(SAND)	107K	BSW	6.5	8.5mm	-	-	-
825-16(RIB)	117/115L	BSW	6.5	13mm	-	-	-
825-17	118/116M	BSW	6.5	12.5mm	-	-	-
825-18	118/116M	BSW	6.5	12.5mm	-	-	-
825-15	117/115M	BSW	6.0	7.5mm	-	-	-



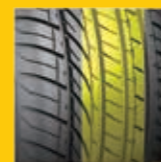
HU901



① Four main rib design provide good performance of avoiding slippery.



② Pitched and big pattern design reduces driving noise and greatly improve cornering stability at high speed.



③ Straight lined central rib design improves maneuverability highly..

Ultra High Performance & Sport



SEAMTYRE PCR
• Engineered in Japan **TIRES**

Sizes Description	LI&SS	Sidewall description	RIM	MM	1/32'	width MM	OA.diameter MM	Max pressure Kpa/PSI
245/45ZR19	102W XL	BLK	8.0	8.2	10.3	706	241	340/50
275/40ZR19	101W	BLK	9.5	8.2	10.3	708	275	300/44
275/40ZR20	106W XL	BLK	9.5	8.2	10.3	732	277	340/50
315/35ZR20	110W XL	BLK	11.0	8.8	11.1	730	318	340/50
285/45ZR22	114W XL	BLK	9.5	8	10.1	818	285	340/50



Tire Wear Indicator

On the tire's shoulder, you can find "△" marks on the tread. Just beside these marks, there are always small raised portions at the grooves. These are called tread wear indicators (T.W.I.)

T.W.I is the important safety mark and used to identify the degree of tread wear. When the tire is worn out until 1.6mm(2/32 inches) groove depth, this indicator will appear on the surface of the tire to warn the user that the tire has been worn to its limit, and please replace with a new tire immediately to ensure driving safety.



Tire Guidelines

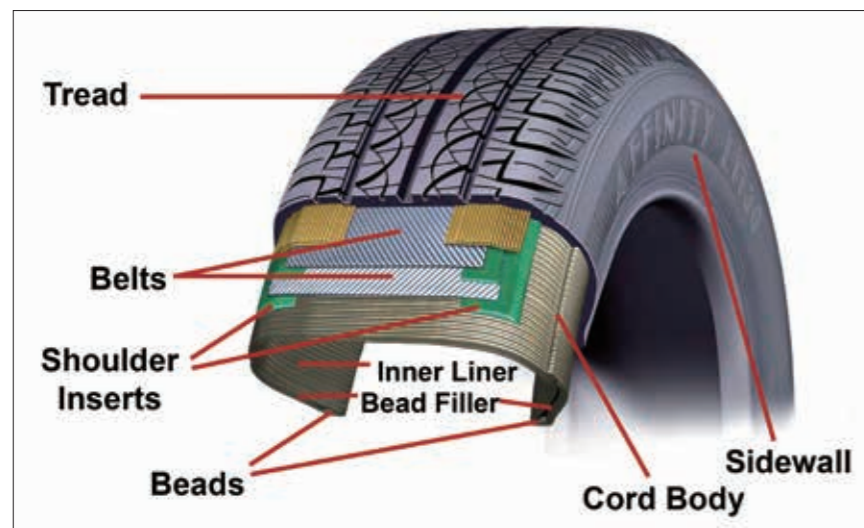
- *If rim is damaged or welded, please do not mount tires.
- *The tyre pressure shall not exceed 275kPa(40psi) when mounting.
- *Inflating of tyre should be in the security cage.
- *Different size or structure of the tire not coaxial mixed (except temporary spare tire).
- *Outer diameter of rim bead seat should be consistent with the bead diameter of the tire.
- *Please refer to the manual or tire placard in vehicle.
- *Please do not adjust air pressure before tires are not completely cooling.
- *Tyre pressure too high or low could cause accidents or tire damage.
- * At least monthly, check the tyre pressure (including the spare tire).
- *Caught in the tread surface foreign bodies may damage the tires.
- *Only specially trained persons should mount tires.

Tire Guidelines

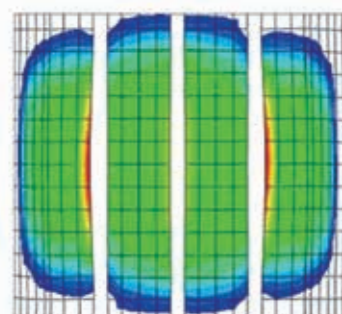
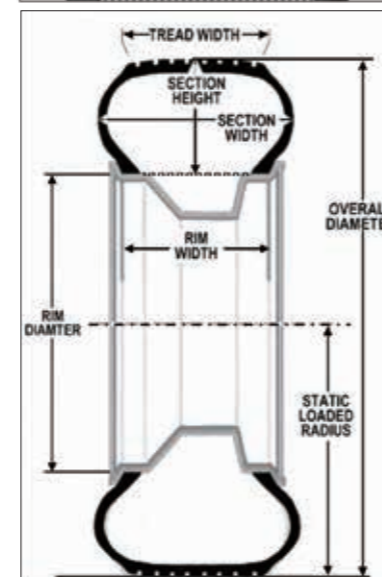
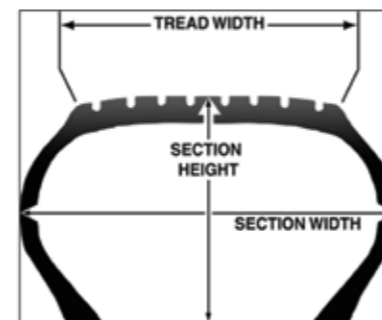
The periodic rotation of tires will be helpful to keep their uniform wear and to extend their service life in a maximum degree. There are several methods of rotation: for the tires worked in all seasons or on the standard road, you can implement the diagonal exchange of the rear axle tires; for the tires with directional design, you can implement the same side exchange of the tires.

Please kindly refer to the manual. to notice the rotation suggestions from the manufacturers. If no specified time limit, you should rotate your tires in each 6,000 to 8,000 kilometers.

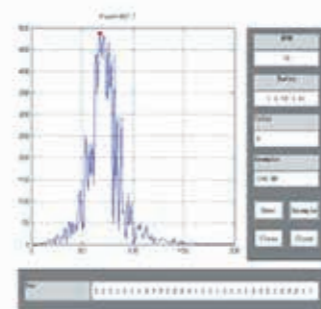
PARTS OF A TIRE:



TIRE DIMENSIONS

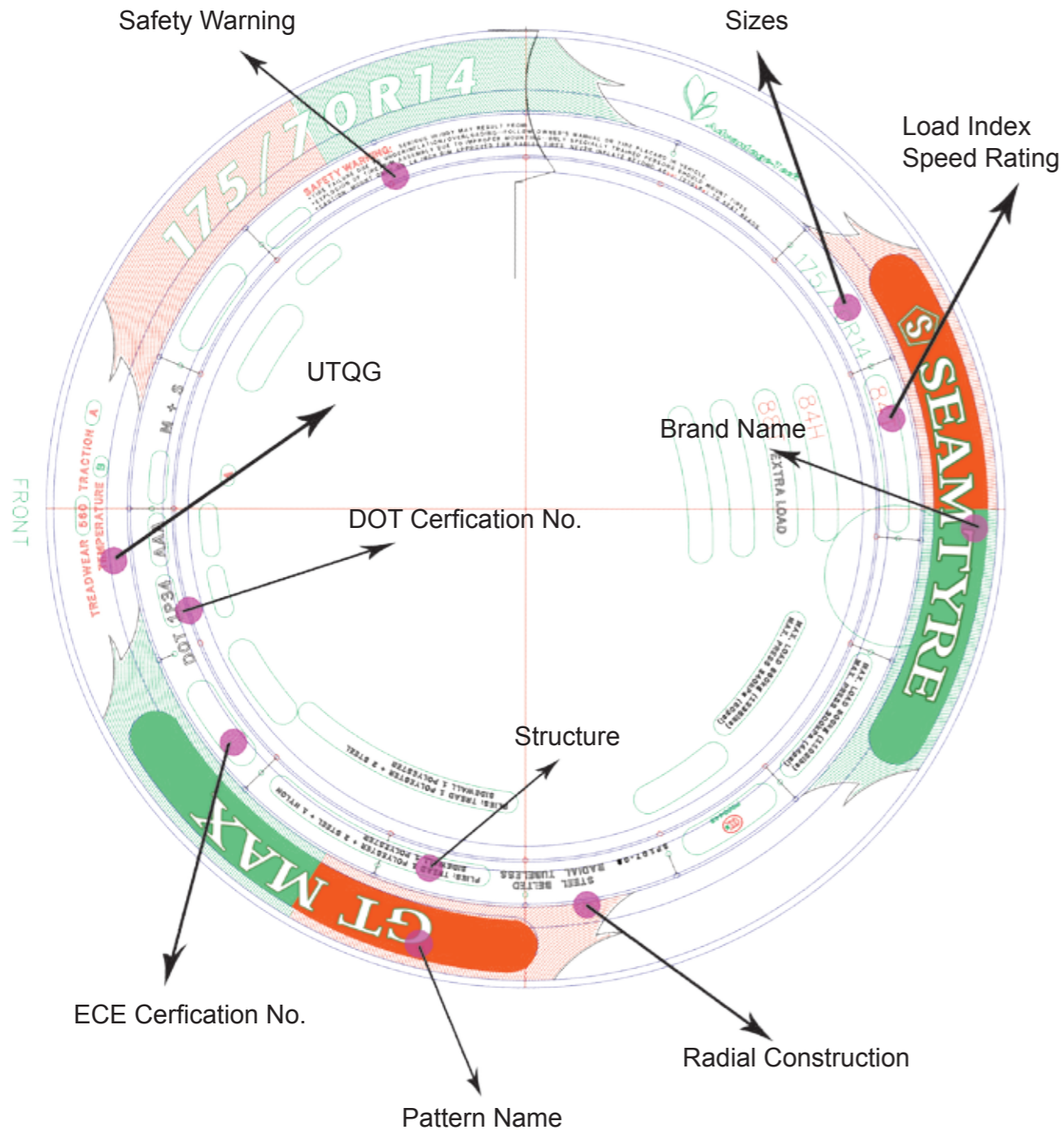


Optimize Footprint



Optimize Pitch-Arrangement

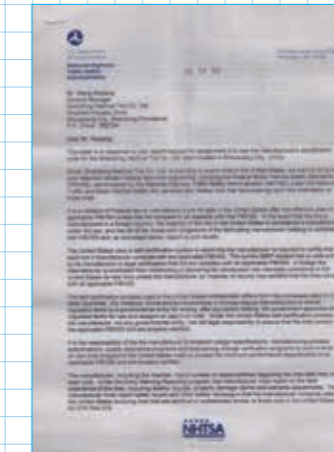
Technical File



CERTIFICATES



ISO9001



DOT



ECE



SONCAP



REACH



GCC



ISO-TS16949



COP



INMETRO